

TABLE 1:  
Sensitivity study of  
HIV-1 viral antigen  
reactivity with HIV-1  
seropositive samples.  
(Number of samples = 197)

**100% Sensitivity of HIV-1 viral antigen**

SEROLOGICAL PROFILE	HIV BLOT 2.2 NUMBER (%)	DUPONT/ORTHO HIV-1 WB NUMBER (%)
GAG, POL and ENV	192 (97.5%)	188 (95.4%)
p24, p31, gp41 and/or gp120/gp160	187 (94.9%)	179 (90.9%)
ENV and GAG or POL	197 (100.0%)	197 (100.0%)

TABLE 2:  
Specificity study of  
HIV-1 viral antigen  
reactivity with normal  
donor samples and  
sera with other viral  
infections.

**High Specificity of HIV-1 viral antigen**

SAMPLE TYPE	NUMBER TESTED	POSITIVE	HIV-1 REACTIVITY	
			INDETERMINATE*	NEGATIVE
Normal Donors	208	0	11	197
HTLV-1	5	0	0	5
CMV	5	0	1	4
EBV (IgM)	5	0	1	4
Varicella zoster (IgG)	5	0	1	4
Measles	6	0	2	4
Rubella	5	0	1	4
Mumps	4	0	1	3
Adenovirus	5	0	2	3
HSV	5	0	0	5
Dengue	5	0	1	4
Total	258	0	21	237

\*All showed as a p24 or p17 band only.

TABLE 3:  
Sensitivity study of  
HIV-2 peptide band with  
HIV-2 seropositive  
samples.  
(Number of samples = 178)

**High Sensitivity for HIV-2 infection detection**

HIV-2 WESTERN BLOT SEROLOGICAL PROFILE*	HIV-2 PEPTIDE REACTIVITY	
	POSITIVE	NEGATIVE
GAG, POL and 2 ENV	160	0
GAG, POL and 1 ENV	18	0

\*Sera defined as positive by results of Pasteur New LAV Blot 2.  
Data provided by Dr. Oliviero E. Varnier and Dr. Flavia Lillo. Laboratory of Human Retroviruses. University of Genoa.

TABLE 4:  
Specificity study of  
HIV-2 peptide band  
with HIV-1 seropositive  
sera, normal donor  
samples and sera with  
other viral infections.

**High specificity of HIV-2 peptide with minimal cross reactivity to HIV-1**

SAMPLE TYPE	NUMBER TESTED	HIV-2 PEPTIDE REACTIVITY	
		POSITIVE	NEGATIVE
HIV-1 seropositive	197	16*	181
Normal Donors	208	0	208
HTLV-1 seropositive	5	0	5
CMV	5	0	5
EBV (IgM)	5	0	5
Varicella zoster (IgG)	5	0	5
Measles	6	0	6
Rubella	5	0	5
Mumps	4	0	4
Adenovirus	5	0	5
HSV	5	0	5
Dengue	5	0	5
Total	455	16	439

\* When tested on the HIV-2 Western Blot, 6 of these samples had reactivity with ENV and GAG or POL, and 9 of these samples had reactivity to only GAG and/or POL while 1 sample was negative.

A total of 15 commercial HIV-1 seroconversion panels were tested and results showed that the HIV Blot 2.2 was able to detect antibody to HIV earlier or in the same sample in all the panels, when compared to other similar tests.

(Panels used: BBI PRB903, PRB904, PRB909, PRB912, PRB916, PRB917, PRB918, PRB919, PRB921, PRB923, PRB924, PRB927, PRB928, PRB932, PRB940)

- Contains purified HIV-1 viral lysate proteins
- Increases detection of early infection (seroconversion panels)
- Provides detection of HIV-2 antibodies on the same strip
- Allows detection of HIV-1 Subtype O
- Includes an anti-IgG internal control band

MP Biomedicals Asia Pacific			MP Biomedicals Worldwide		MP Biomedicals Europe
MP Biomedicals Asia Pacific Pte Ltd, HQ 2 Pioneer Place Singapore 627885 Tel : (65) 6775 0008 Fax : (65) 6774 6146 Email: enquiry_ap@mpbio.com	MP Biomedicals Shanghai Pte Ltd Room 505, Metro Bank Plaza No.1160 West Yan'an Road Changning District, Shanghai 200052 Tel : (86) 21 6281 5005 Fax : (86) 21 6281 5663 Email: mpbio_sh@mail.online.sh.cn	MP Biomedicals Japan K. K. Pineland Building 3-11 Nihonbashi-Ohdenmachi Chuo-ku, Tokyo 103-0011 Tel : (81) 3 3808 2102 Fax : (81) 3 3808 2401 Email: mpbioj@wg8.so-net.ne.jp	MP Biomedicals Australia Pty Ltd P.O.Box 187 2/29 Bearing Road Seven Hills, NSW 2147 Tel : (61) 2 9838 7422 Fax : (61) 2 9838 7390 Email: australia@mpbio.com	MP Biomedicals LLC, HQ 3 Hutton Center Drive Suite 100, Santa Ana California 92702 Tel : (1949) 833 2500 Toll Free (USA): 1 800 888 7008 Fax : (1949) 421 2539 Email: sales@mpbio.com	MP Biomedicals SAS, HQ Parc d'Innovation BP 50067 67402 Illkirch Cedex France Tel : (33) 388 67 4607 Fax : (33) 388 67 5420 Email: custserv.eur@mpbio.com



Distributed in the UK by

**Sterilab Services**

Mornington Terrace, Harrogate  
North Yorkshire, HG1 5DH  
Tel : (44) 1423 523300  
Email : sales@sterilab.co.uk

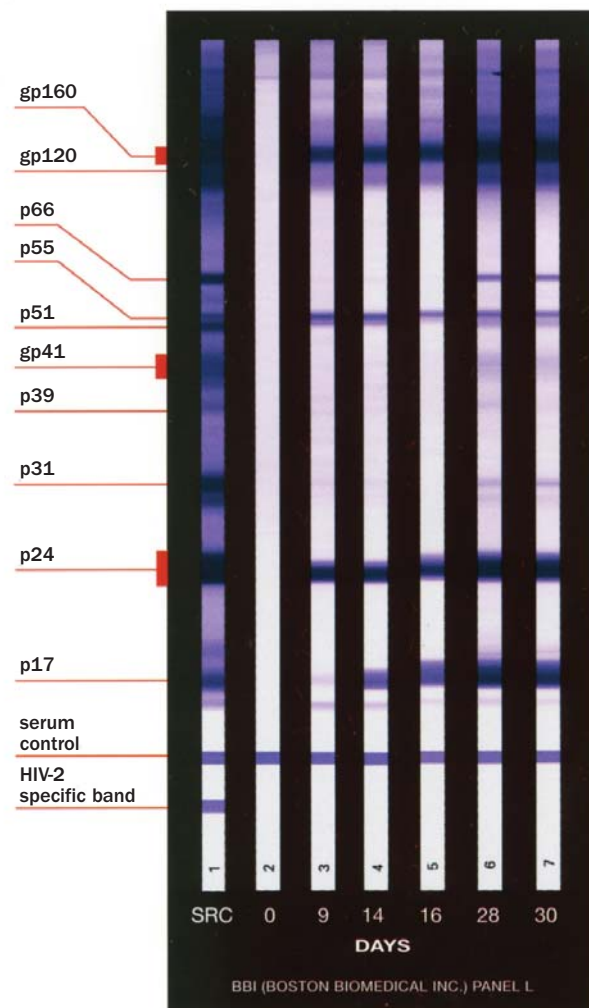
CBC0910-1

## MP Diagnostics

### HIV Blot 2.2 Western Blot Assay

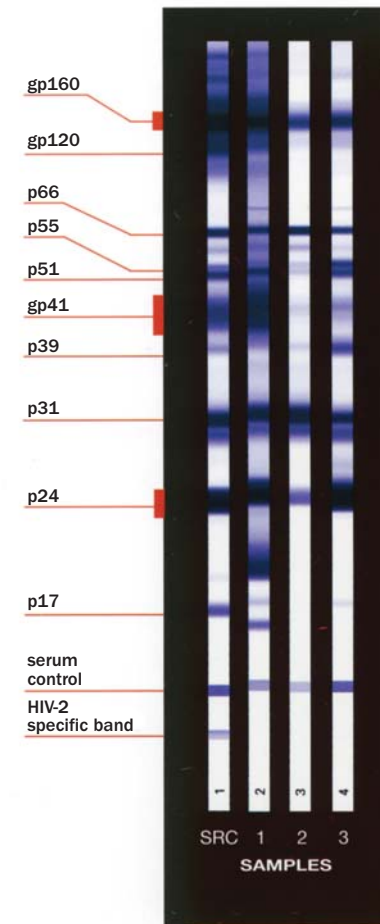
HIV Blot 2.2 is an enzyme immunoassay for the in-vitro detection of antibodies to HIV in human serum or plasma. It is intended as a more specific confirmation test on blood or plasma specimens found repeatedly reactive using a screening procedure. HIV Blot 2.2 contains HIV-2 specific peptide band to aid in the detection of HIV-2 positivity. HIV Blot 2.2 also includes an anti-human IgG internal control band functioning as a sample addition control, reagent control and procedural control.

#### SEROCONVERSION SAMPLES



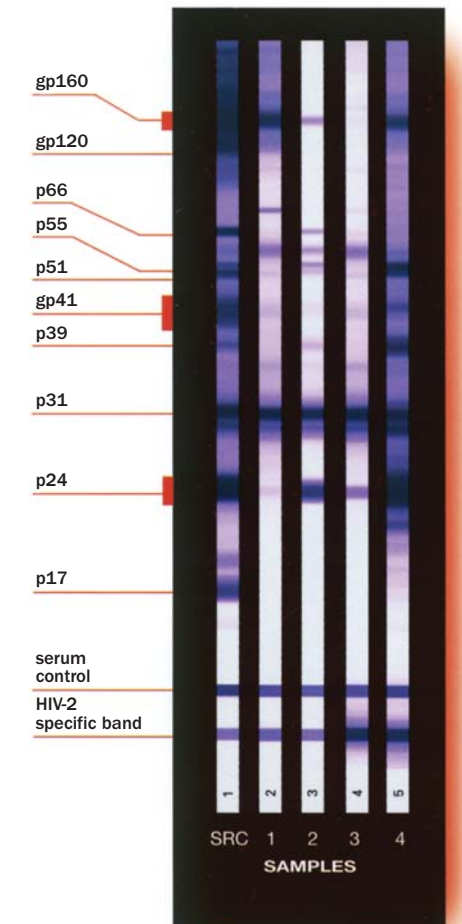
HIV Western Blot allows one to stage disease progression by monitoring development of antibodies to HIV-1 markers in samples collected at different times.

#### HIV-1 SUBTYPE 0



HIV-1 Subtype 0 profiles are quite variable and often appear to be similar to those seen with HIV-1 populations. However, some Subtype 0 sera express a profile where the gp160 band is significantly weaker than either the p24 or p31 bands. Additionally, gp41 antibodies are detected frequently in Subtype 0 positive sera, unlike results obtained with HIV-2 cross reactive populations.

#### HIV-2 CROSS REACTIVITY



Typical cross reactive profiles of an HIV-2 serum on the HIV-1 western blot demonstrate reactivity to at least GAG and/or POL antigens. However, it is common to find reactivity with all of the HIV-1 specific bands EXCEPT gp41. The absence of gp41 reactivity in the presence of reactivity with gp160 and gp120 and other antigens, p24, p31 and p66 is indicative of HIV-2. HIV Blot 2.2 includes an HIV-2 specific peptide band; positive reaction of a sample with this band is indicative of HIV-2 infection.